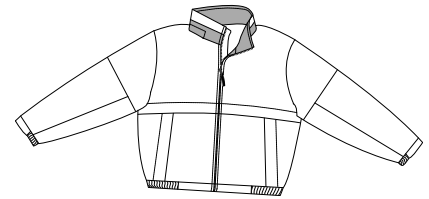
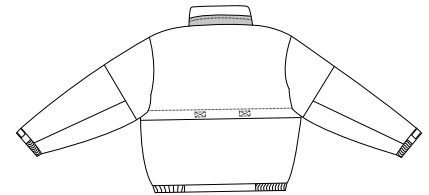


Legacy Jacket

PORT AUTHORITY®



Front



Back

J764

- * 100% polyester shell * 100% polyester mesh upper back lining
- * 100% nylon lining on lower back/front/sleeves * Contrasting neck trim
- * Lower slash zip pockets * Port Pocket™ access * Contrast neck trim * Hidden hood
- * Front and back vents * Elastic cuffs with Velcro adjustable strap
- * Elastic sides on bottom hem * Locker loop * Inside chest pocket

Care Instructions:

Machine wash cold, separately, gentle cycle. Mild detergent. No bleach. Tumble dry low. Cool iron if needed.

Finished Measurements in Inches

Size	XS	S	M	L	XL	2XL	3XL	4XL	5XL	6XL
Length	25	25.5	26	26.5	28	28.5	29.5	30	31.5	32.5
Chest	22	23.5	25	26.5	28	29.5	31	32.5	37	38
Sleeve	33	34.5	36	36.5	38	38.5	39.5	40	42	42.5
Collar Ht	3	3	3	3	3	3	3	3	3	3
Areas for Decoration	Left/Right Chest, Full Back			Port Pocket™			L/R Front Vent, Back Vent			

Collar measured from center back seam to top hem. Chest width measured 1" below arm hole.
Body length measured from back neck seam to hem. Sleeve length measured from center back seam to hem.

Colors

	Black/Steel Grey
	Dark Navy/Red
	Hunter/Dark Navy
	Khaki/Nutmeg
	Red/Dark Navy
	Stone/Dark Navy

Please Note:

Colors shown are approximate and for reference only. For closest match see PMS colors, or for exact match, returnable samples and grommated samples are available.

Color Chart

Colors	Black	Dark Navy	Hunter	Khaki	Red	Stone
Textile PMS	19-4006TC	19-4024TC	19-6110TC	17-1312TC	19-1762TC	14-4501TC
General PMS	Process Black	5395C	5535C	7530C	201C	7528C
Trim Colors	Dark Navy	Nutmeg	Red	Steel Grey		
Textile PMS	19-4024TC	18-1016 TC	19-1762TC	18-4011 TC		
General PMS	5395C	7532C	201C	431C		